

Sequence Overview

Sequence Details

Name:	Geohydrology	Created On:	15/Oct/15 13:38:15
Directory:	Instrument Data\ICS2100\Geohydrology\Fa	Created By:	Metropolitian State
Data Vault:	ChromeleonLocal	Updated On:	15/Oct/15 18:05:09
No. of Injections:	11	Updated By:	Metropolitian State

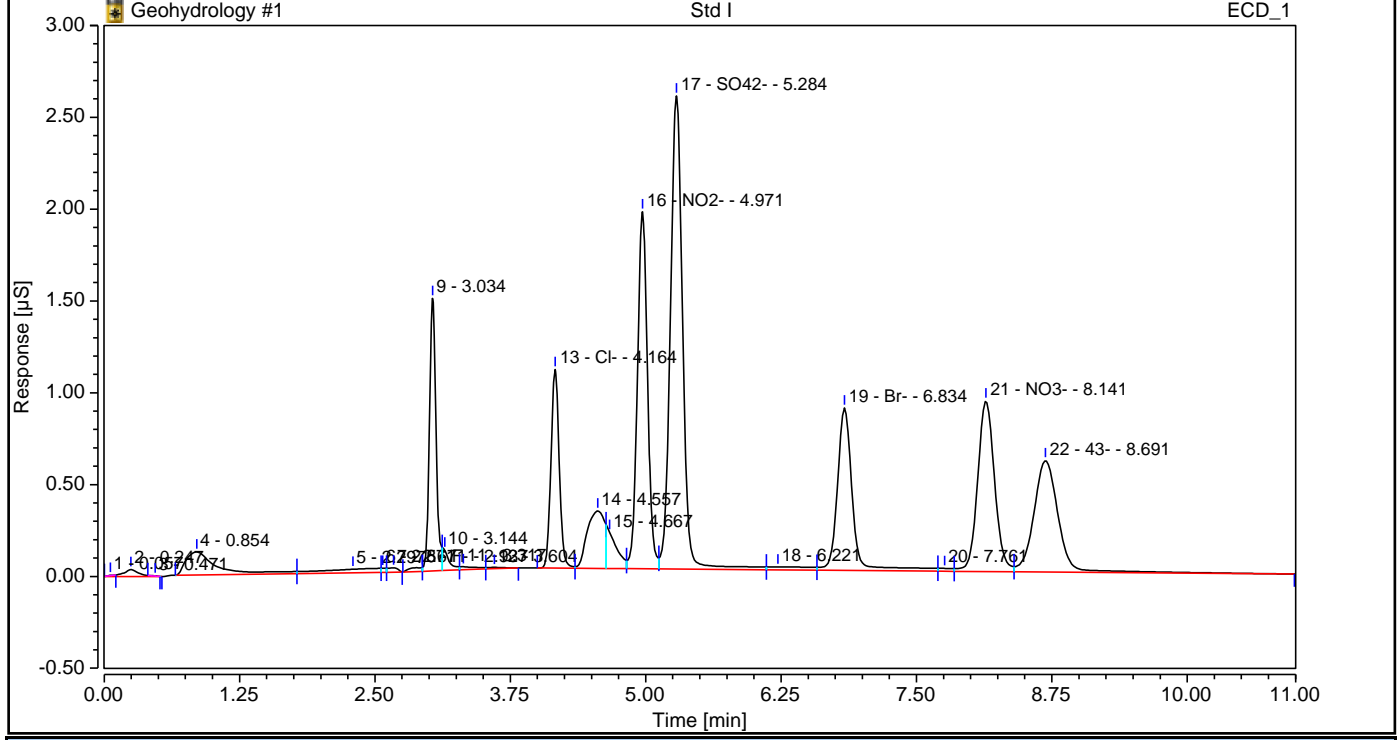
Injection Details

No.	Injection Name	Position	Type	Level	Inject Time	Status
1	Std I	1	Calibration Standard	01	15/Oct/15 14:33:02	Finished
2	Std II	2	Calibration Standard	02	15/Oct/15 14:46:31	Finished
3	Std III	3	Calibration Standard	03	15/Oct/15 15:00:23	Finished
4	Rinse	4	Unknown		15/Oct/15 15:14:14	Finished
5	JBR	5	Unknown		15/Oct/15 15:28:06	Finished
6	ErickBill	6	Unknown		15/Oct/15 15:41:58	Finished
7	7 minute	7	Unknown		15/Oct/15 15:55:50	Finished
8	TS	8	Unknown		15/Oct/15 16:09:42	Finished
9	2nd chance	9	Unknown		15/Oct/15 16:23:34	Finished
10	Rinse	10	Unknown		15/Oct/15 16:37:26	Finished
11	Rinse	11	Unknown		15/Oct/15 16:51:17	Finished

Chromatogram and Results

Injection Details		
Injection Name:	Std I	Run Time (min): 11.00
Vial Number:	1	Injection Volume: 5000.00
Injection Type:	Calibration Standard	Channel: ECD_1
Calibration Level:	01	Wavelength: n.a.
Instrument Method:	Geohydrology	Bandwidth: n.a.
Processing Method:	Geohydrology	Dilution Factor: 1.0000
Injection Date/Time:	15/Oct/15 14:33	Sample Weight: 1.0000

Chromatogram



Integration Results

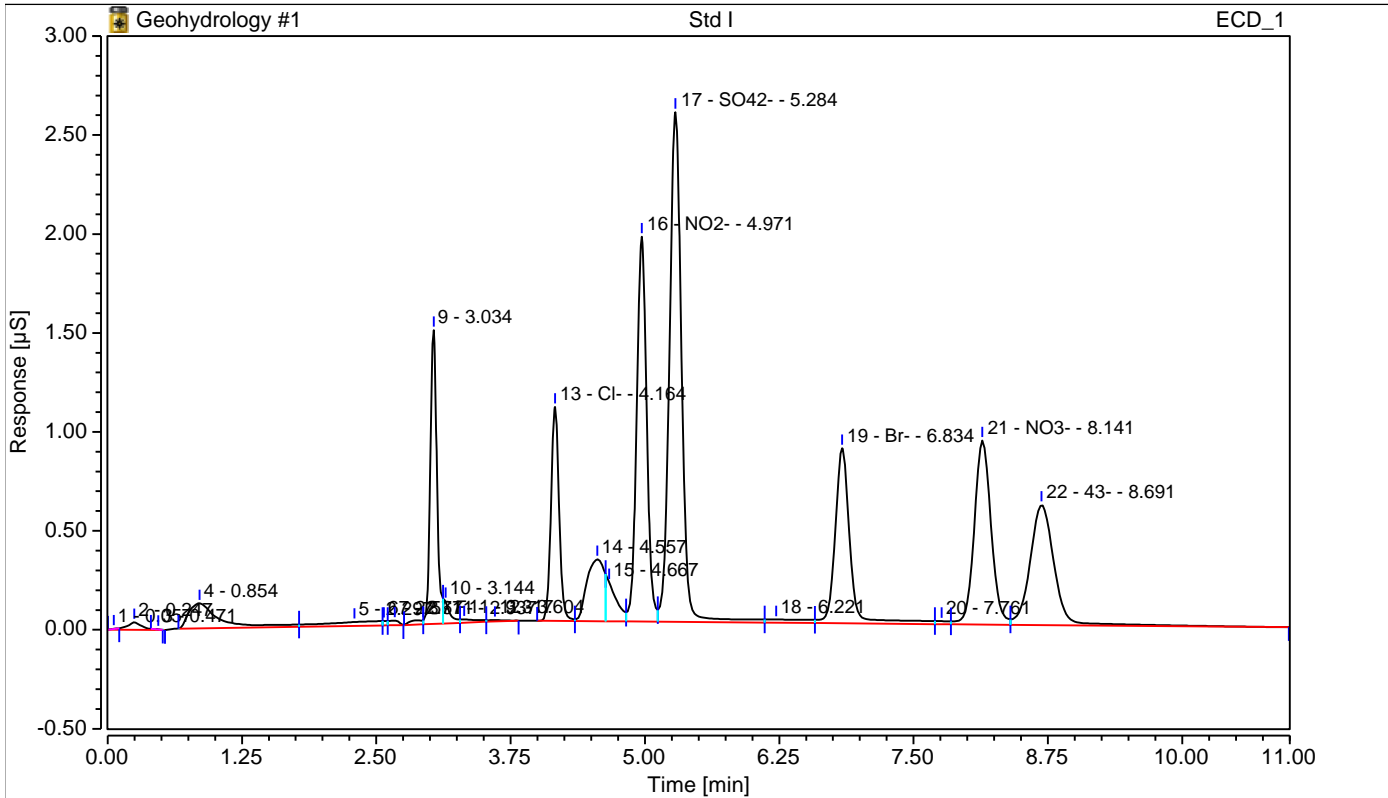
No.	Peak Name	Retention Time min	Area µS*min	Height µS	Relative Area %	Relative Height %	Amount ppm
1		0.057	0.000	0.002	0.01	0.02	n.a.
2		0.247	0.007	0.038	0.48	0.37	n.a.
3		0.471	0.000	0.001	0.01	0.01	n.a.
4		0.854	0.042	0.126	3.02	1.21	n.a.
5		2.297	0.013	0.019	0.91	0.19	n.a.
6		2.571	0.001	0.022	0.08	0.21	n.a.
7		2.671	0.003	0.023	0.18	0.22	n.a.
8	F-	2.937	0.003	0.020	0.21	0.19	0.4868
9		3.034	0.105	1.484	7.52	14.22	n.a.
10		3.144	0.008	0.112	0.61	1.08	n.a.
11		3.317	0.003	0.017	0.22	0.16	n.a.
12		3.604	0.001	0.007	0.09	0.07	n.a.
13	Cl-	4.164	0.095	1.081	6.82	10.36	0.3403
14		4.557	0.057	0.313	4.08	3.00	n.a.
15		4.667	0.024	0.196	1.70	1.88	n.a.
16	NO2-	4.971	0.211	1.944	15.14	18.63	1.0793
17	SO42-	5.284	0.338	2.576	24.32	24.68	1.7154
18		6.221	0.007	0.016	0.54	0.16	n.a.
19	Br-	6.834	0.143	0.885	10.27	8.48	1.1523
20		7.761	0.002	0.015	0.16	0.15	n.a.
21	NO3-	8.141	0.168	0.929	12.12	8.91	1.1496

22	43-	8.691	0.160	0.607	11.53	5.82	1.7174
Total:		1.390	10.436	100.00	100.00		

Chromatogram and SST Results

Injection Details		
Injection Name:	Std I	Run Time (min): 11.00
Vial Number:	1	Injection Volume: 5000.00
Injection Type:	Calibration Standard	Channel: ECD_1
Calibration Level:	01	Wavelength: n.a.
Instrument Method:	Geohydrology	Bandwidth: n.a.
Processing Method:	Geohydrology	Dilution Factor: 1.0000
Injection Date/Time:	15/Oct/15 14:33	Sample Weight: 1.0000

Chromatogram

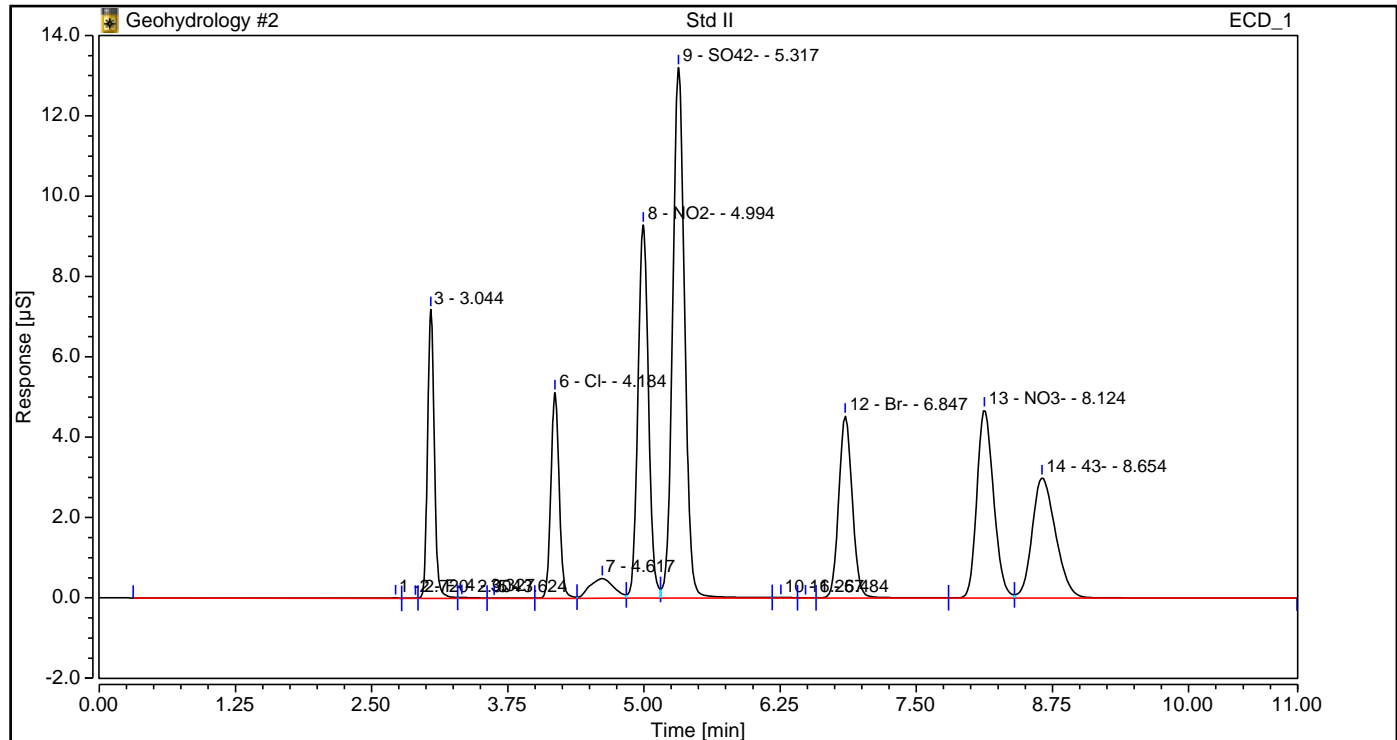


SST Results					
No.	Name	Inj.Condition	Peak	Test Result	Injection
Number of executed test cases: n.a.			Total Result:	Passed	

Chromatogram and Results

Injection Details			
Injection Name:	Std II	Run Time (min):	11.00
Vial Number:	2	Injection Volume:	5000.00
Injection Type:	Calibration Standard	Channel:	ECD_1
Calibration Level:	02	Wavelength:	n.a.
Instrument Method:	Geohydrology	Bandwidth:	n.a.
Processing Method:	Geohydrology	Dilution Factor:	1.0000
Injection Date/Time:	15/Oct/15 14:46	Sample Weight:	1.0000

Chromatogram

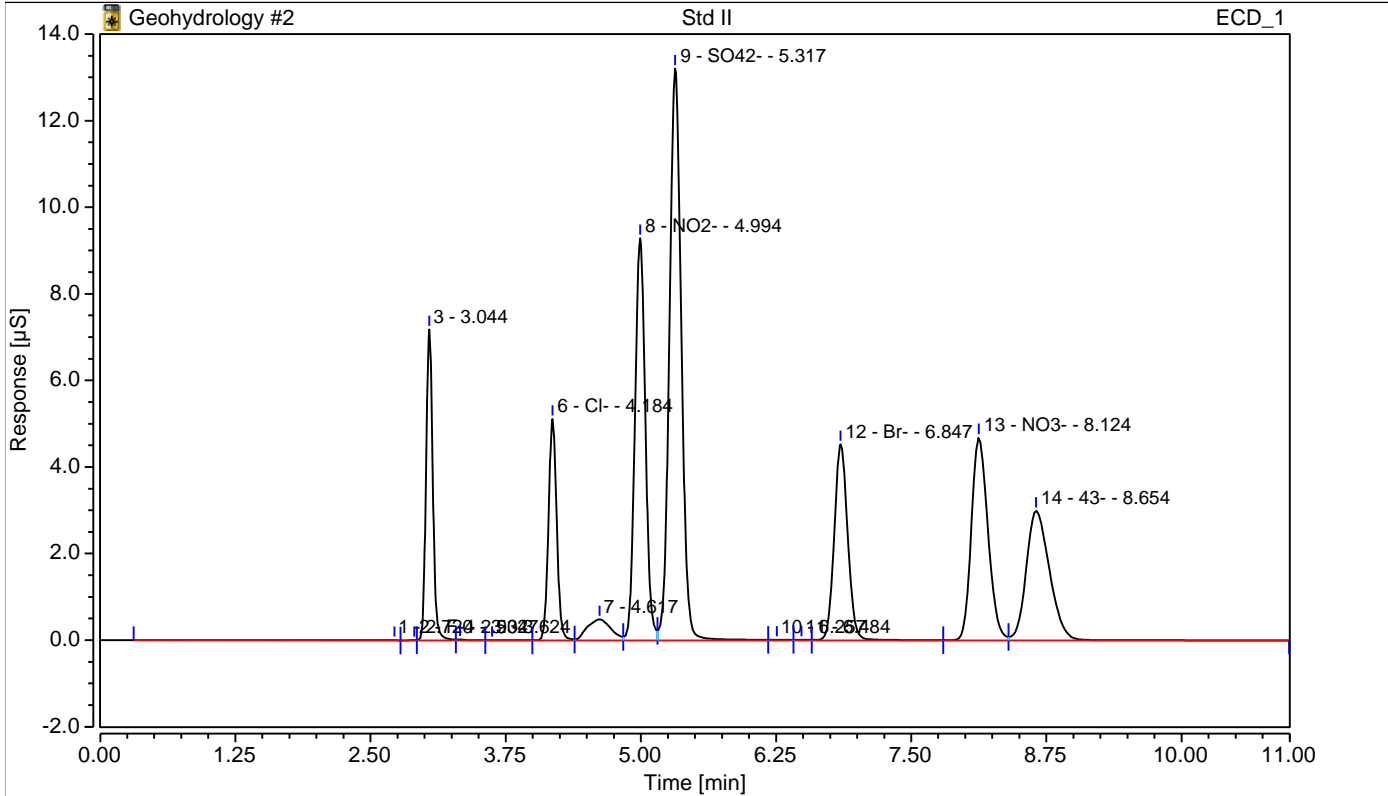


Integration Results							
No.	Peak Name	Retention Time min	Area µS*min	Height µS	Relative Area %	Relative Height %	Amount ppm
1		2.720	0.009	0.012	0.14	0.02	n.a.
2	F-	2.904	0.001	0.009	0.01	0.02	0.4837
3		3.044	0.519	7.188	8.50	15.10	n.a.
4		3.327	0.004	0.023	0.06	0.05	n.a.
5		3.624	0.003	0.008	0.05	0.02	n.a.
6	Cl-	4.184	0.452	5.118	7.41	10.75	1.4274
7		4.617	0.124	0.489	2.03	1.03	n.a.
8	NO2-	4.994	1.044	9.294	17.11	19.52	4.8572
9	SO42-	5.317	1.692	13.212	27.73	27.75	7.1123
10		6.257	0.004	0.017	0.06	0.04	n.a.
11		6.484	0.002	0.014	0.04	0.03	n.a.
12	Br-	6.847	0.662	4.533	10.85	9.52	4.7259
13	NO3-	8.124	0.836	4.690	13.70	9.85	4.7307
14	43-	8.654	0.751	2.996	12.31	6.29	7.1087
Total:			6.103	47.604	100.00	100.00	

Chromatogram and SST Results

Injection Details		
<i>Injection Name:</i>	Std II	<i>Run Time (min):</i> 11.00
<i>Vial Number:</i>	2	<i>Injection Volume:</i> 5000.00
<i>Injection Type:</i>	Calibration Standard	<i>Channel:</i> ECD_1
<i>Calibration Level:</i>	02	<i>Wavelength:</i> n.a.
<i>Instrument Method:</i>	Geohydrology	<i>Bandwidth:</i> n.a.
<i>Processing Method:</i>	Geohydrology	<i>Dilution Factor:</i> 1.0000
<i>Injection Date/Time:</i>	15/Oct/15 14:46	<i>Sample Weight:</i> 1.0000

Chromatogram

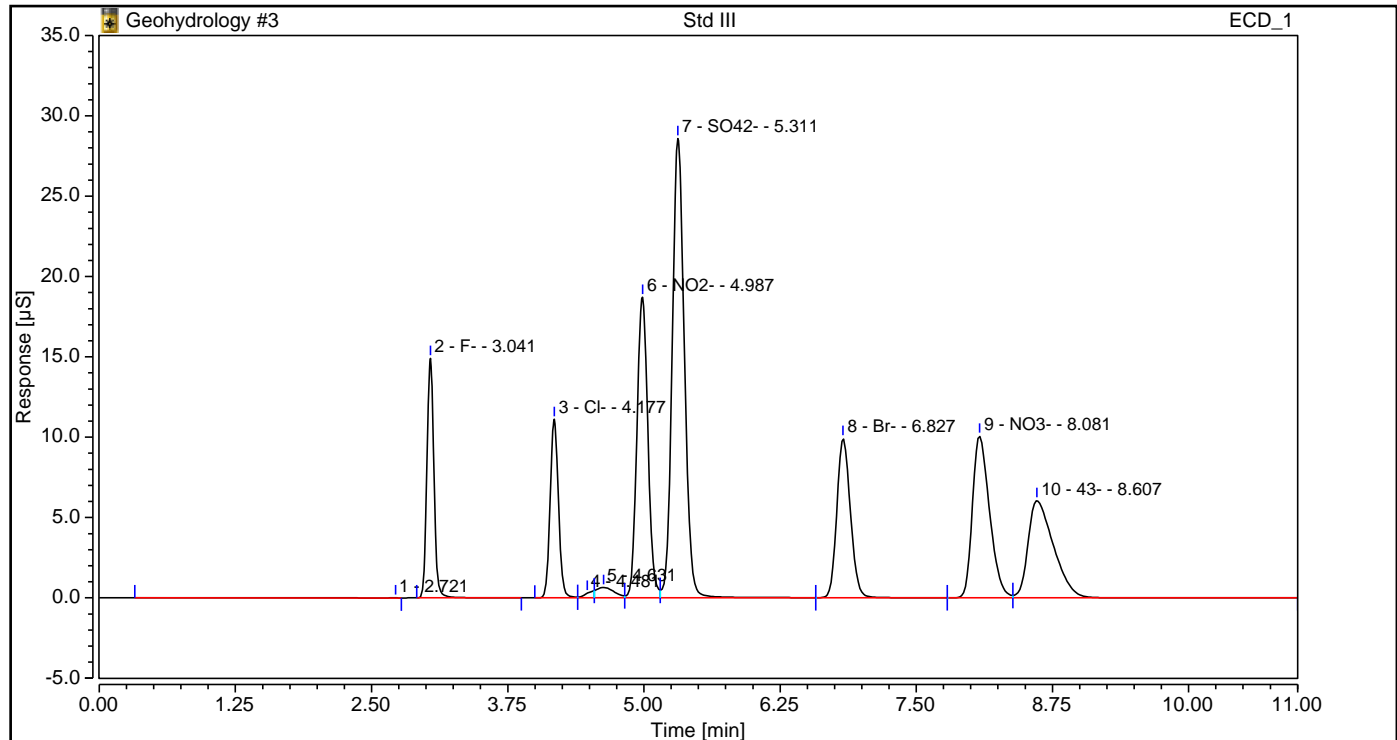


SST Results					
No.	Name	Inj.Condition	Peak	Test Result	Injection
Number of executed test cases: n.a.			Total Result:	Passed	

Chromatogram and Results

Injection Details			
Injection Name:	Std III	Run Time (min):	11.00
Vial Number:	3	Injection Volume:	5000.00
Injection Type:	Calibration Standard	Channel:	ECD_1
Calibration Level:	03	Wavelength:	n.a.
Instrument Method:	Geohydrology	Bandwidth:	n.a.
Processing Method:	Geohydrology	Dilution Factor:	1.0000
Injection Date/Time:	15/Oct/15 15:00	Sample Weight:	1.0000

Chromatogram



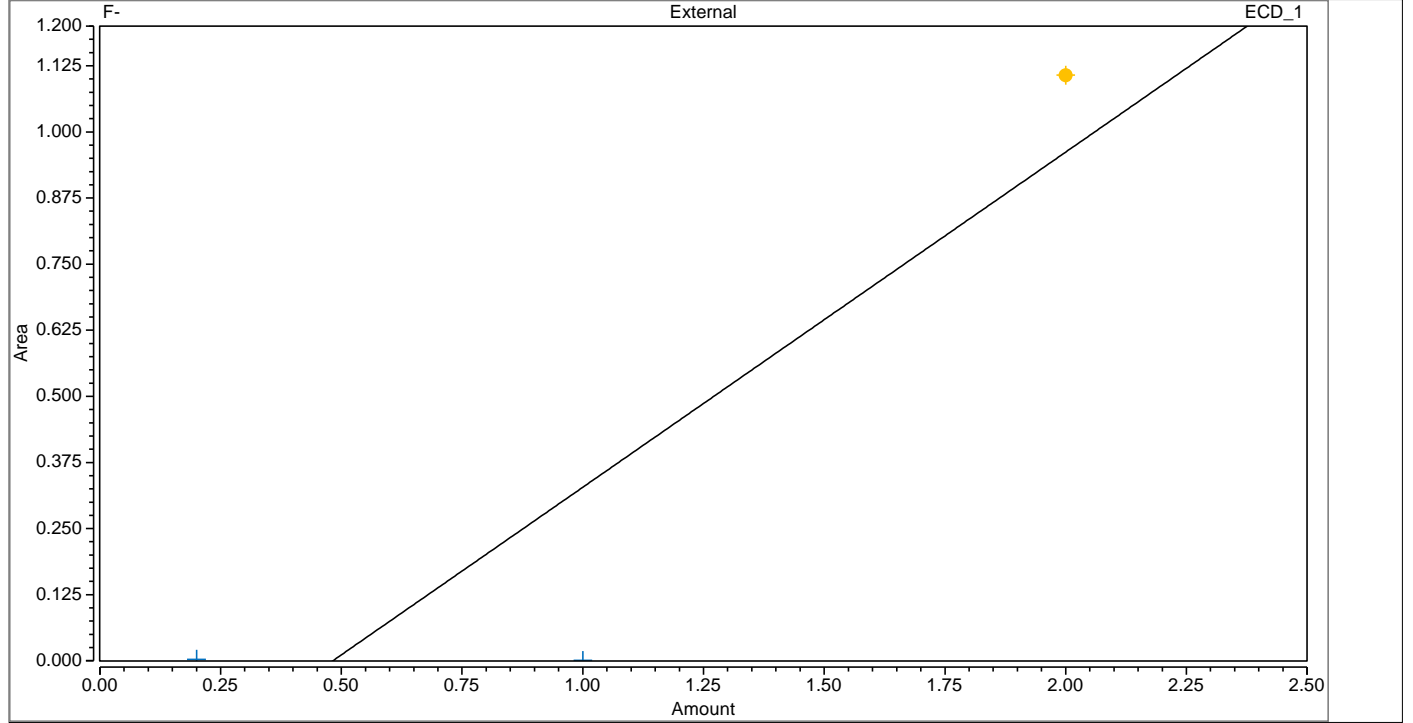
Integration Results

No.	Peak Name	Retention Time min	Area µS*min	Height µS	Relative Area %	Relative Height %	Amount ppm
1		2.721	0.005	0.012	0.04	0.01	n.a.
2	F-	3.041	1.107	14.910	8.46	14.86	2.2295
3	Cl-	4.177	0.980	11.112	7.49	11.07	3.0323
4		4.481	0.036	0.293	0.27	0.29	n.a.
5		4.631	0.125	0.652	0.95	0.65	n.a.
6	NO2-	4.987	2.192	18.710	16.76	18.65	10.0635
7	SO42-	5.311	3.715	28.591	28.40	28.49	15.1723
8	Br-	6.827	1.446	9.930	11.06	9.90	10.1218
9	NO3-	8.081	1.841	10.074	14.07	10.04	10.1197
10	43-	8.607	1.635	6.057	12.50	6.04	15.1739
Total:			13.082	100.341	100.00	100.00	

Calibration

Calibration Details		F-	
Calibration Type	Lin, WithOffset	Offset (C0)	-0.3056
Evaluation Type	Area	Slope (C1)	0.6337
Number of Calibration Points	3	Curve (C2)	0.0000
Number of disabled Calibration Points	0	R-Square	0.8020

Calibration Plot



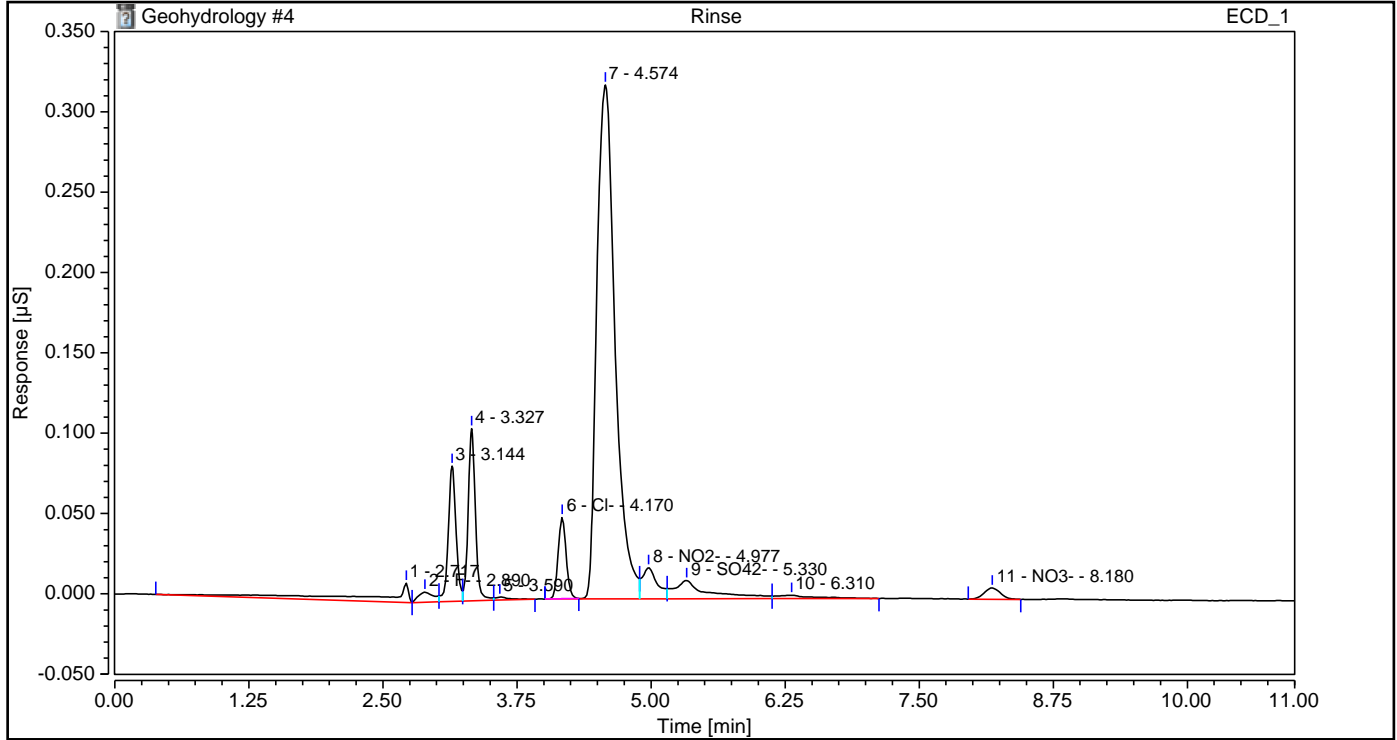
Calibration Results

Calibration Results		F-					
No.	Injection Name	Calibration Level	X Value	Y Value	Y Value	Area $\mu\text{S}\cdot\text{min}$	Height μS
			ECD_1	ECD_1	ECD_1	ECD_1	ECD_1
			F-	F-	F-	F-	F-
1	Std I	01	0.2000	0.0029	0.0029	0.003	0.020
2	Std II	02	1.0000	0.0009	0.0009	0.001	0.009
3	Std III	03	2.0000	1.1072	1.1072	1.107	14.910

Chromatogram and Results

Injection Details		
Injection Name:	Rinse	Run Time (min): 11.00
Vial Number:	4	Injection Volume: 5000.00
Injection Type:	Unknown	Channel: ECD_1
Calibration Level:		Wavelength: n.a.
Instrument Method:	Geohydrology	Bandwidth: n.a.
Processing Method:	Geohydrology	Dilution Factor: 1.0000
Injection Date/Time:	15/Oct/15 15:14	Sample Weight: 1.0000

Chromatogram



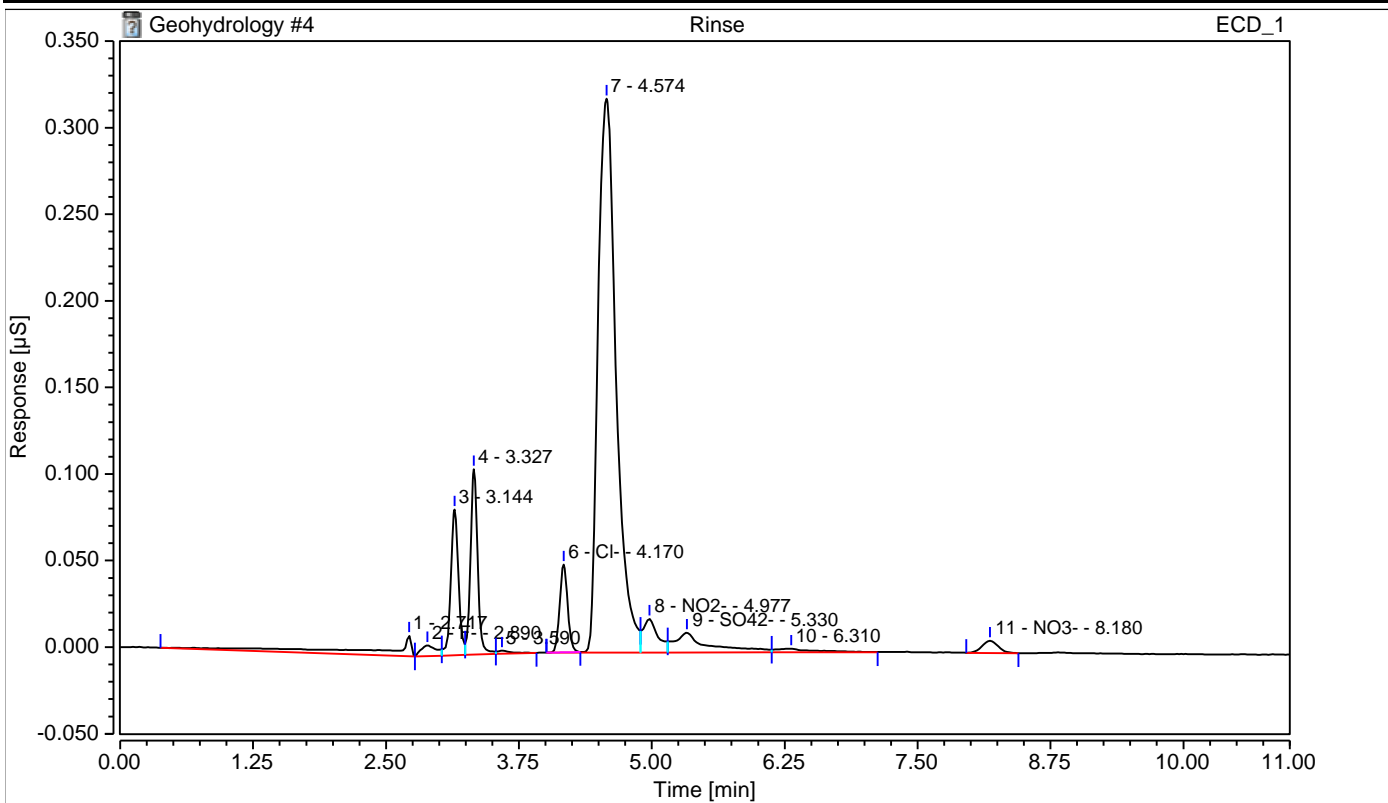
Integration Results							
No.	Peak Name	Retention Time min	Area µS*min	Height µS	Relative Area %	Relative Height %	Amount ppm
1		2.717	0.004	0.012	4.54	1.93	n.a.
2	F-	2.890	0.001	0.006	1.05	1.00	0.4839
3		3.144	0.007	0.084	7.18	13.53	n.a.
4		3.327	0.008	0.107	8.50	17.22	n.a.
5		3.590	0.000	0.002	0.28	0.30	n.a.
6	Cl-	4.170	0.004	0.051	4.46	8.15	0.0653
7		4.574	0.063	0.320	64.32	51.43	n.a.
8	NO2-	4.977	0.003	0.019	3.21	3.13	0.1392
9	SO42-	5.330	0.004	0.011	4.32	1.83	0.3849
10		6.310	0.001	0.002	0.88	0.33	n.a.
n.a.	Br-	n.a.	n.a.	n.a.	n.a.	n.a.	n.a.
11	NO3-	8.180	0.001	0.007	1.27	1.14	0.2526
n.a.	43-	n.a.	n.a.	n.a.	n.a.	n.a.	n.a.
Total:			0.098	0.622	100.00	100.00	

Chromatogram and SST Results

Injection Details

Injection Name:	Rinse	Run Time (min):	11.00
Vial Number:	4	Injection Volume:	5000.00
Injection Type:	Unknown	Channel:	ECD_1
Calibration Level:		Wavelength:	n.a.
Instrument Method:	Geohydrology	Bandwidth:	n.a.
Processing Method:	Geohydrology	Dilution Factor:	1.0000
Injection Date/Time:	15/Oct/15 15:14	Sample Weight:	1.0000

Chromatogram



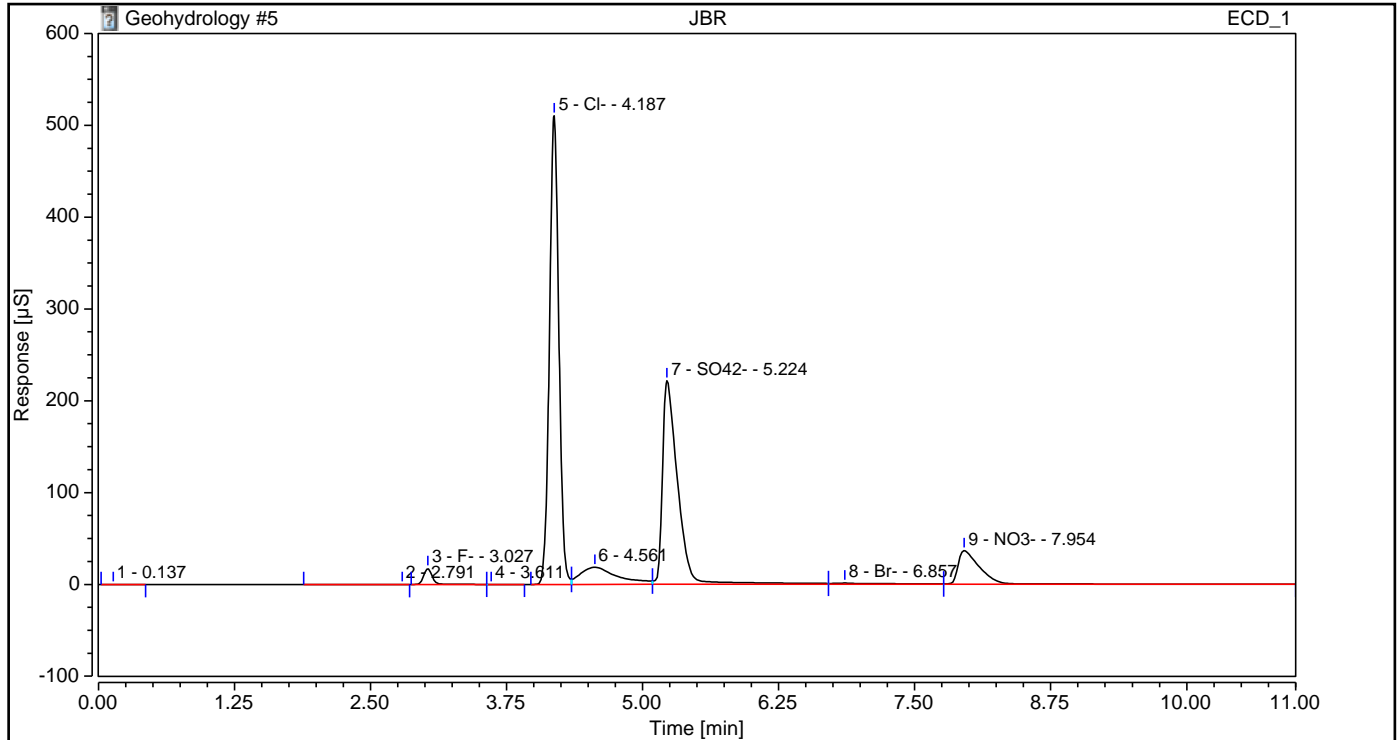
SST Results

No.	Name	Inj.Condition	Peak	Test Result	Injection
Number of executed test cases: n.a.			Total Result:	Passed	

Chromatogram and Results

Injection Details			
Injection Name:	JBR	Run Time (min):	11.00
Vial Number:	5	Injection Volume:	5000.00
Injection Type:	Unknown	Channel:	ECD_1
Calibration Level:		Wavelength:	n.a.
Instrument Method:	Geohydrology	Bandwidth:	n.a.
Processing Method:	Geohydrology	Dilution Factor:	1.0000
Injection Date/Time:	15/Oct/15 15:28	Sample Weight:	1.0000

Chromatogram



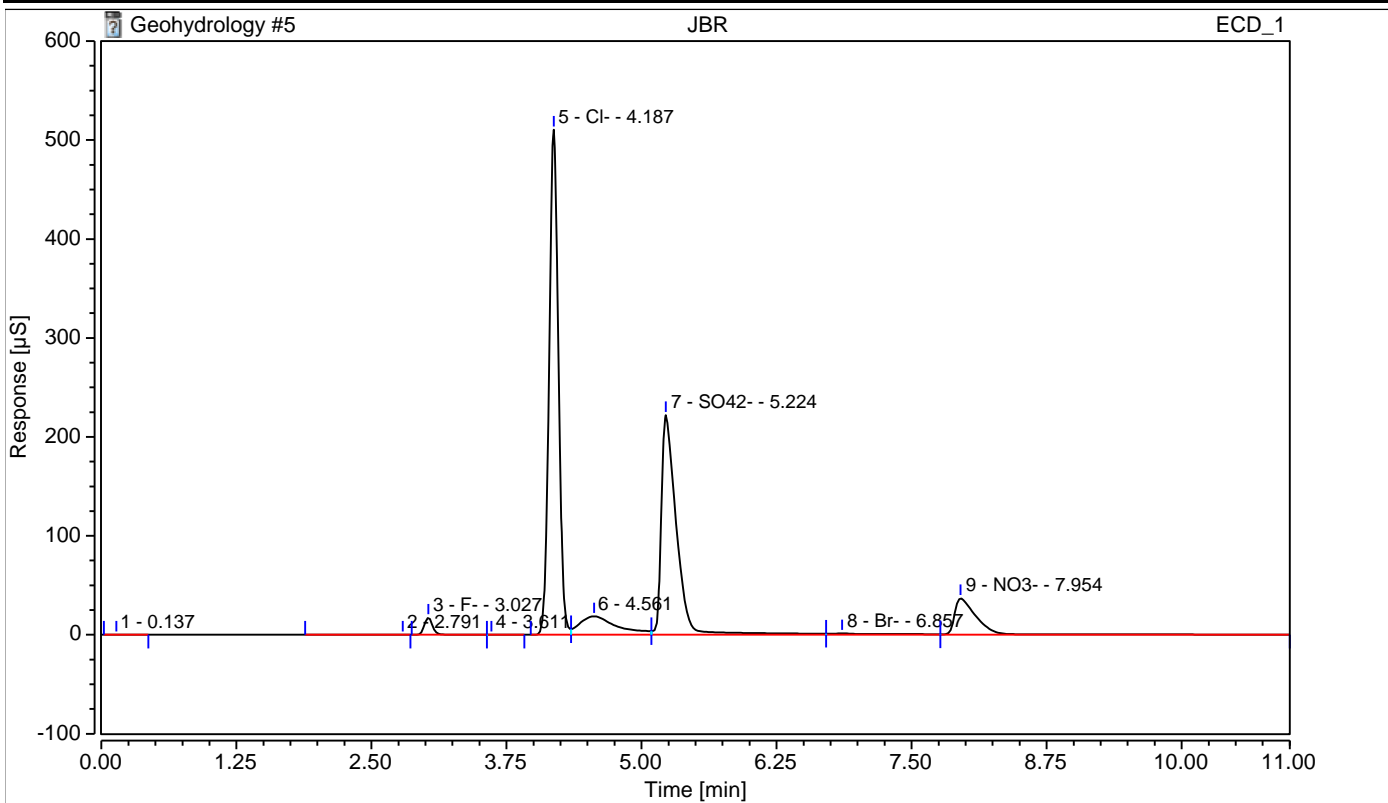
Integration Results							
No.	Peak Name	Retention Time min	Area µS*min	Height µS	Relative Area %	Relative Height %	Amount ppm
1		0.137	0.000	0.001	0.00	0.00	n.a.
2		2.791	0.000	0.002	0.00	0.00	n.a.
3	F-	3.027	1.551	17.258	1.47	2.14	2.9298
4		3.611	0.001	0.009	0.00	0.00	n.a.
5	Cl-	4.187	50.878	510.327	48.23	63.31	154.7433
6		4.561	7.394	18.667	7.01	2.32	n.a.
n.a.	NO2-	n.a.	n.a.	n.a.	n.a.	n.a.	n.a.
7	SO42-	5.224	36.327	221.770	34.44	27.51	145.1285
8	Br-	6.857	0.762	1.346	0.72	0.17	5.4152
9	NO3-	7.954	8.571	36.711	8.12	4.55	46.2232
n.a.	43-	n.a.	n.a.	n.a.	n.a.	n.a.	n.a.
Total:			105.486	806.091	100.00	100.00	

Chromatogram and SST Results

Injection Details

Injection Name:	JBR	Run Time (min):	11.00
Vial Number:	5	Injection Volume:	5000.00
Injection Type:	Unknown	Channel:	ECD_1
Calibration Level:		Wavelength:	n.a.
Instrument Method:	Geohydrology	Bandwidth:	n.a.
Processing Method:	Geohydrology	Dilution Factor:	1.0000
Injection Date/Time:	15/Oct/15 15:28	Sample Weight:	1.0000

Chromatogram



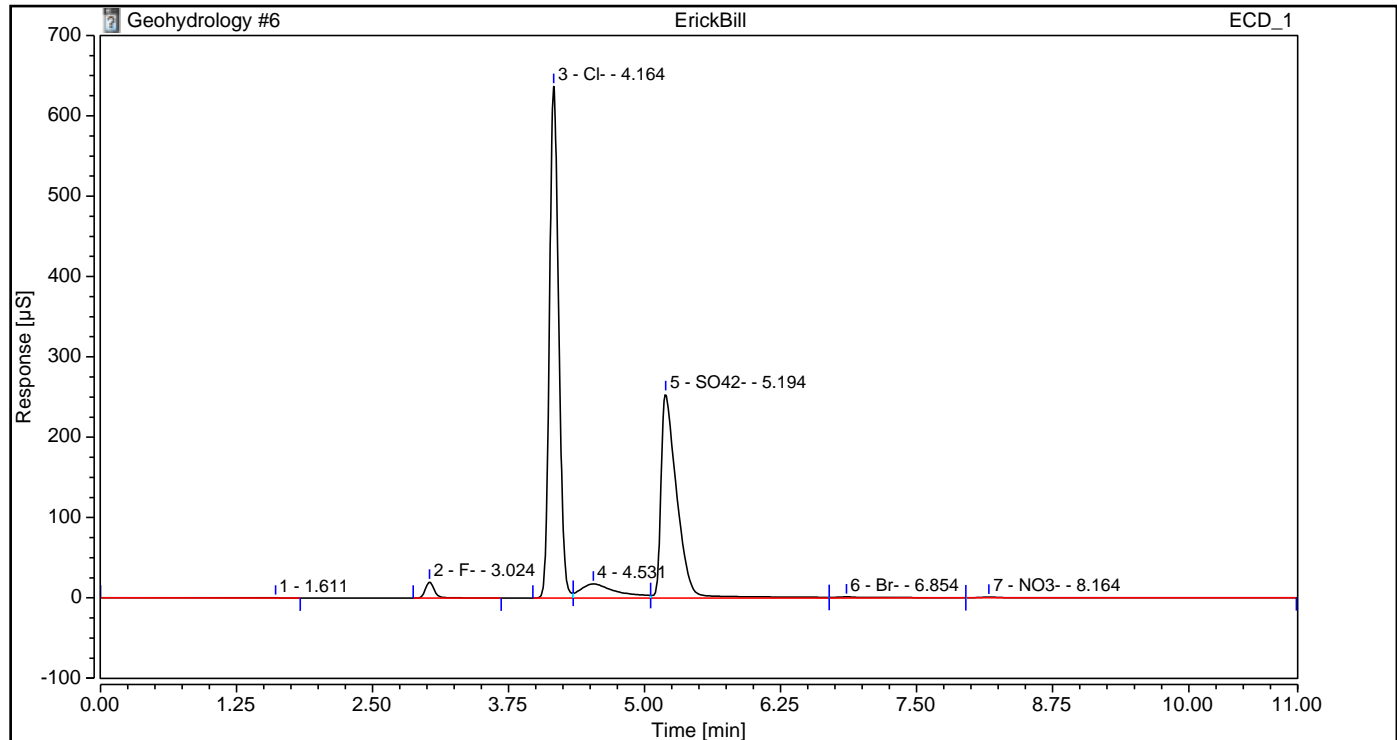
SST Results

No.	Name	Inj.Condition	Peak	Test Result	Injection
Number of executed test cases: n.a.			Total Result:	Passed	

Chromatogram and Results

Injection Details			
Injection Name:	ErickBill	Run Time (min):	11.00
Vial Number:	6	Injection Volume:	5000.00
Injection Type:	Unknown	Channel:	ECD_1
Calibration Level:		Wavelength:	n.a.
Instrument Method:	Geohydrology	Bandwidth:	n.a.
Processing Method:	Geohydrology	Dilution Factor:	1.0000
Injection Date/Time:	15/Oct/15 15:41	Sample Weight:	1.0000

Chromatogram

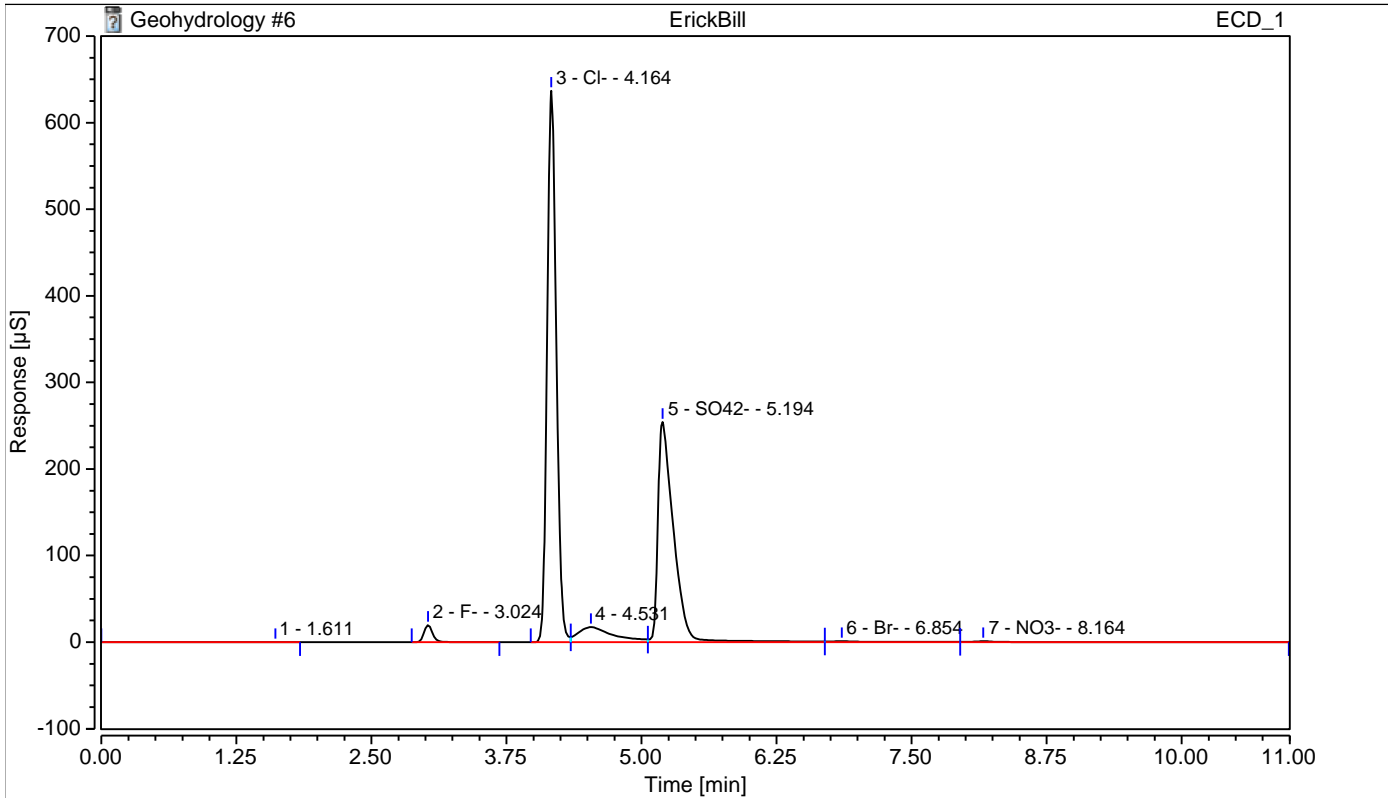


Integration Results							
No.	Peak Name	Retention Time min	Area µS*min	Height µS	Relative Area %	Relative Height %	Amount ppm
1		1.611	0.057	0.064	0.05	0.01	n.a.
2	F-	3.024	1.890	19.961	1.63	2.14	3.4651
3	Cl-	4.164	62.892	636.907	54.38	68.42	191.2700
4		4.531	6.627	17.419	5.73	1.87	n.a.
n.a.	NO2-	n.a.	n.a.	n.a.	n.a.	n.a.	n.a.
5	SO42-	5.194	43.029	254.201	37.20	27.31	171.8326
6	Br-	6.854	0.683	1.306	0.59	0.14	4.8719
7	NO3-	8.164	0.475	1.085	0.41	0.12	2.7967
n.a.	43-	n.a.	n.a.	n.a.	n.a.	n.a.	n.a.
Total:			115.654	930.943	100.00	100.00	

Chromatogram and SST Results

Injection Details		
Injection Name:	ErickBill	Run Time (min): 11.00
Vial Number:	6	Injection Volume: 5000.00
Injection Type:	Unknown	Channel: ECD_1
Calibration Level:		Wavelength: n.a.
Instrument Method:	Geohydrology	Bandwidth: n.a.
Processing Method:	Geohydrology	Dilution Factor: 1.0000
Injection Date/Time:	15/Oct/15 15:41	Sample Weight: 1.0000

Chromatogram

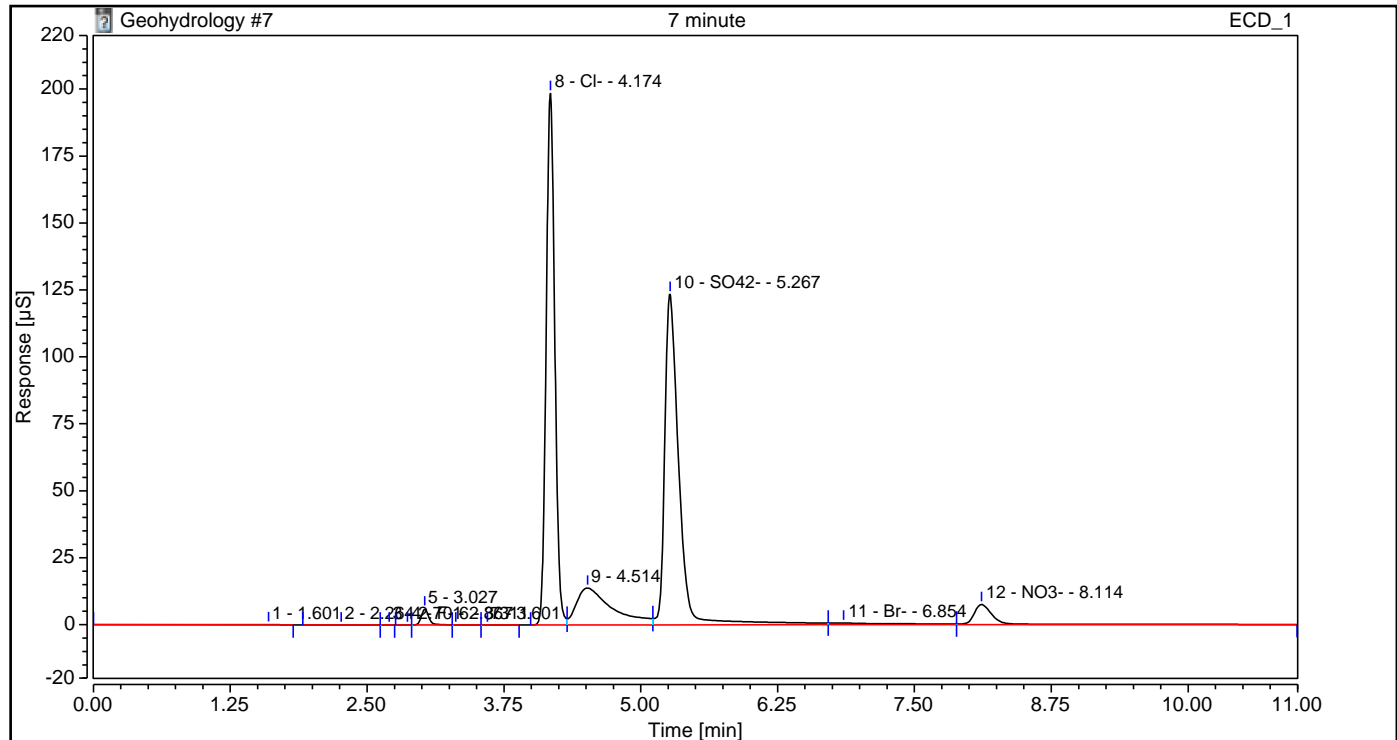


SST Results					
No.	Name	Inj.Condition	Peak	Test Result	Injection
Number of executed test cases: n.a.			Total Result:	Passed	

Chromatogram and Results

Injection Details			
Injection Name:	7 minute	Run Time (min):	11.00
Vial Number:	7	Injection Volume:	5000.00
Injection Type:	Unknown	Channel:	ECD_1
Calibration Level:		Wavelength:	n.a.
Instrument Method:	Geohydrology	Bandwidth:	n.a.
Processing Method:	Geohydrology	Dilution Factor:	1.0000
Injection Date/Time:	15/Oct/15 15:55	Sample Weight:	1.0000

Chromatogram

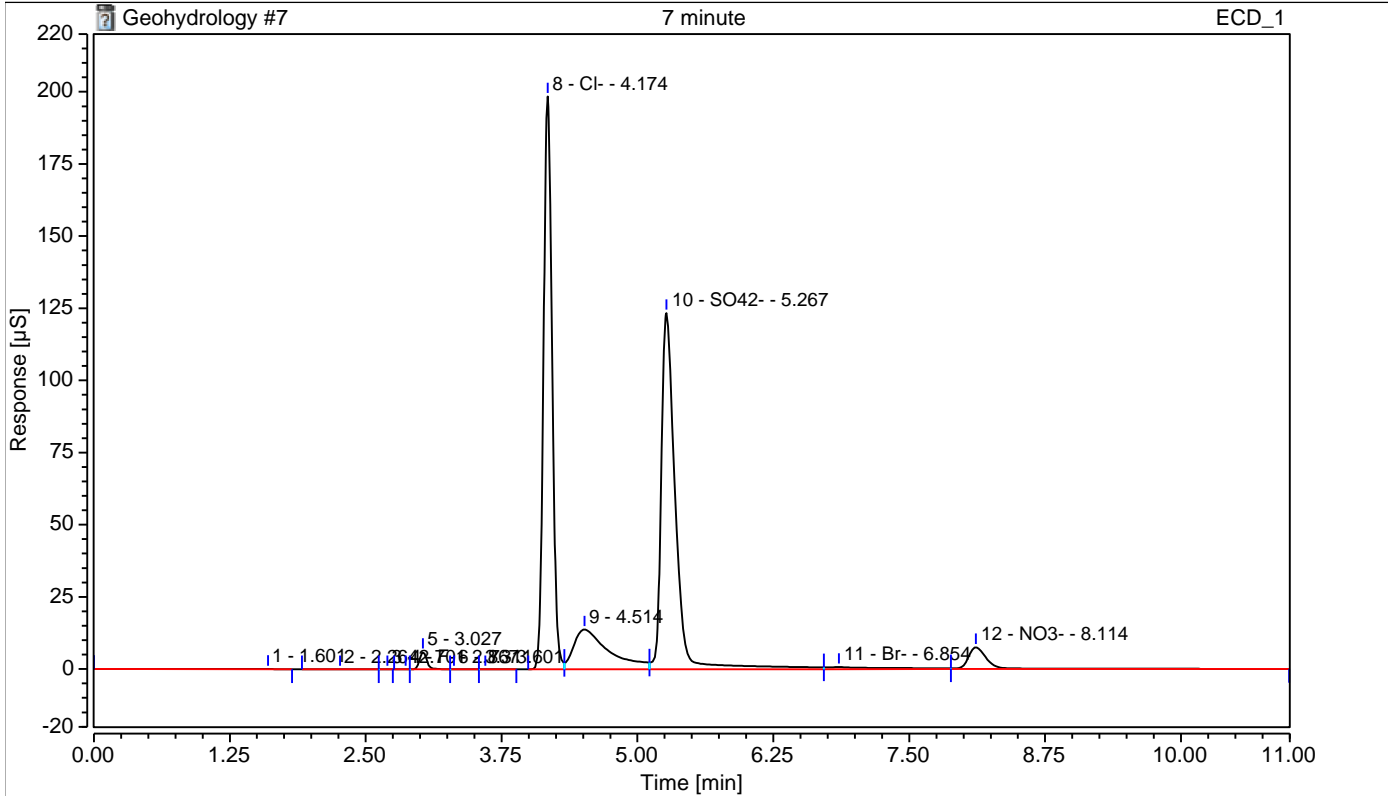


Integration Results							
No.	Peak Name	Retention Time min	Area µS*min	Height µS	Relative Area %	Relative Height %	Amount ppm
1		1.601	0.045	0.050	0.10	0.01	n.a.
2		2.264	0.002	0.003	0.01	0.00	n.a.
3		2.701	0.001	0.007	0.00	0.00	n.a.
4	F-	2.867	0.001	0.009	0.00	0.00	0.4838
5		3.027	0.463	6.023	1.04	1.72	n.a.
6		3.311	0.004	0.029	0.01	0.01	n.a.
7		3.601	0.001	0.005	0.00	0.00	n.a.
8	Cl-	4.174	18.085	198.446	40.66	56.71	55.0368
9		4.514	5.175	13.773	11.63	3.94	n.a.
n.a.	NO2-	n.a.	n.a.	n.a.	n.a.	n.a.	n.a.
10	SO42-	5.267	18.600	123.372	41.81	35.25	74.4856
11	Br-	6.854	0.484	0.694	1.09	0.20	3.5027
12	NO3-	8.114	1.622	7.532	3.65	2.15	8.9456
n.a.	43-	n.a.	n.a.	n.a.	n.a.	n.a.	n.a.
Total:			44.481	349.944	100.00	100.00	

Chromatogram and SST Results

Injection Details		
Injection Name:	7 minute	Run Time (min): 11.00
Vial Number:	7	Injection Volume: 5000.00
Injection Type:	Unknown	Channel: ECD_1
Calibration Level:		Wavelength: n.a.
Instrument Method:	Geohydrology	Bandwidth: n.a.
Processing Method:	Geohydrology	Dilution Factor: 1.0000
Injection Date/Time:	15/Oct/15 15:55	Sample Weight: 1.0000

Chromatogram

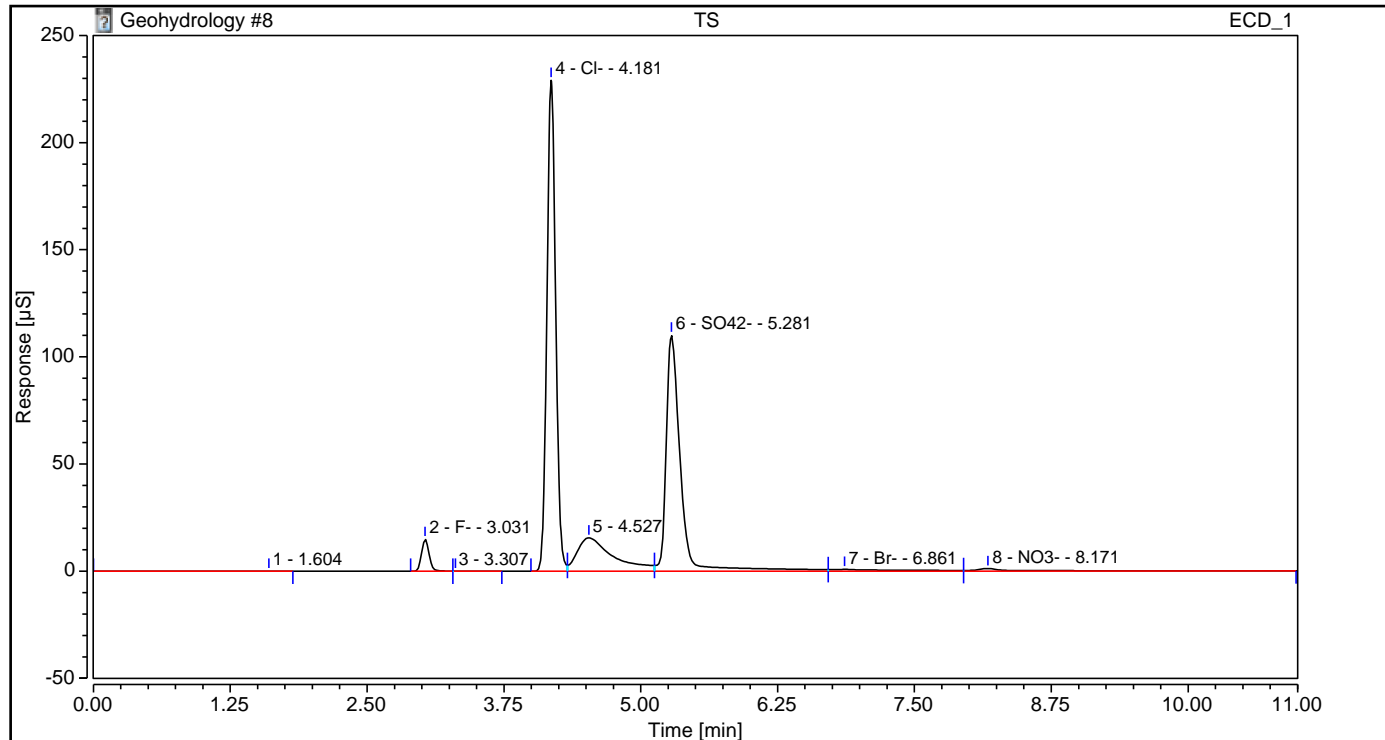


SST Results					
No.	Name	Inj. Condition	Peak	Test Result	Injection
Number of executed test cases: n.a.			Total Result:	Passed	

Chromatogram and Results

Injection Details			
Injection Name:	TS	Run Time (min):	11.00
Vial Number:	8	Injection Volume:	5000.00
Injection Type:	Unknown	Channel:	ECD_1
Calibration Level:		Wavelength:	n.a.
Instrument Method:	Geohydrology	Bandwidth:	n.a.
Processing Method:	Geohydrology	Dilution Factor:	1.0000
Injection Date/Time:	15/Oct/15 16:09	Sample Weight:	1.0000

Chromatogram



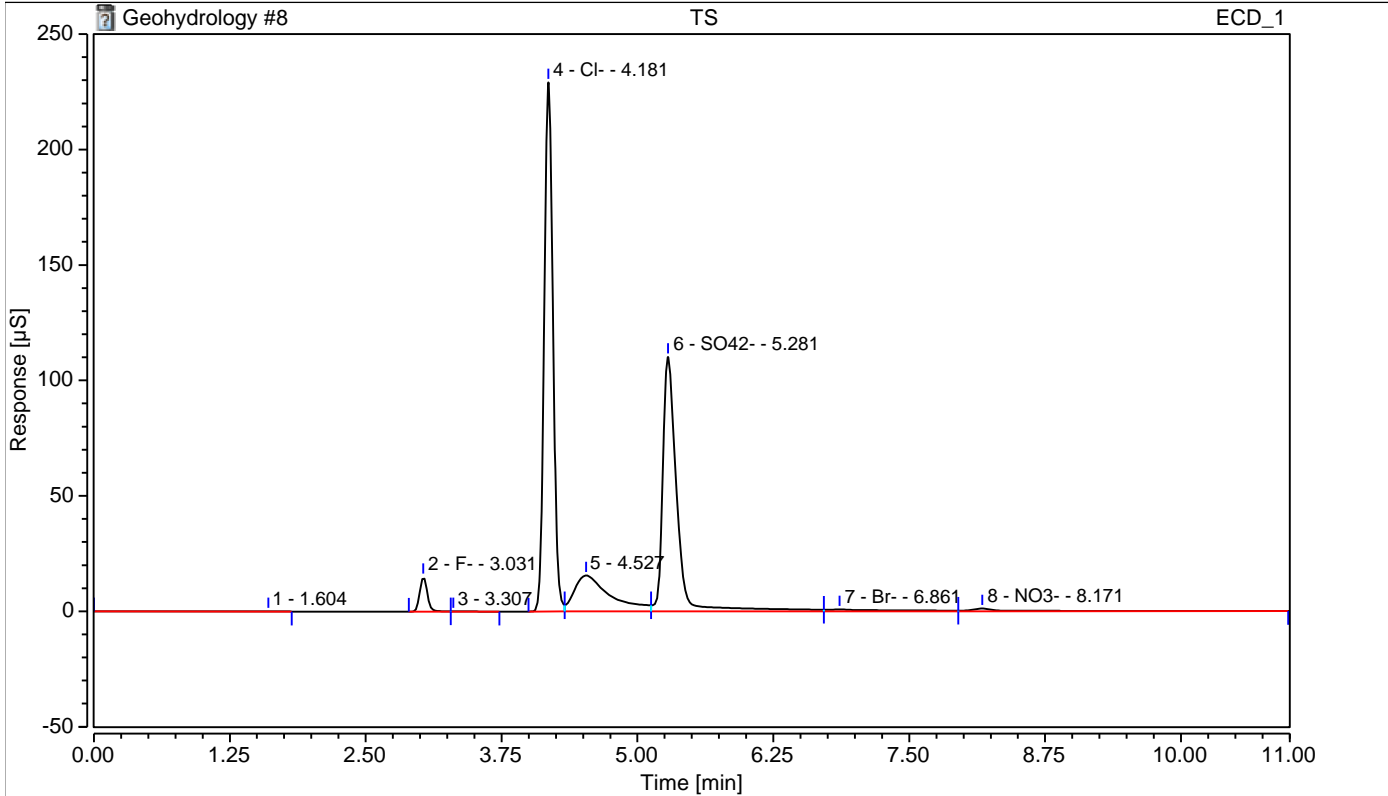
Integration Results

No.	Peak Name	Retention Time min	Area µS*min	Height µS	Relative Area %	Relative Height %	Amount ppm
1		1.604	0.054	0.060	0.12	0.02	n.a.
2	F-	3.031	1.206	14.923	2.61	4.01	2.3861
3		3.307	0.007	0.061	0.02	0.02	n.a.
4	Cl-	4.181	21.337	229.198	46.08	61.59	64.9245
5		4.527	5.935	15.634	12.82	4.20	n.a.
n.a.	NO2-	n.a.	n.a.	n.a.	n.a.	n.a.	n.a.
6	SO42-	5.281	16.652	110.253	35.97	29.63	66.7257
7	Br-	6.861	0.591	0.822	1.28	0.22	4.2337
8	NO3-	8.171	0.517	1.201	1.12	0.32	3.0178
n.a.	43-	n.a.	n.a.	n.a.	n.a.	n.a.	n.a.
Total:			46.299	372.153	100.00	100.00	

Chromatogram and SST Results

Injection Details		
Injection Name:	TS	Run Time (min): 11.00
Vial Number:	8	Injection Volume: 5000.00
Injection Type:	Unknown	Channel: ECD_1
Calibration Level:		Wavelength: n.a.
Instrument Method:	Geohydrology	Bandwidth: n.a.
Processing Method:	Geohydrology	Dilution Factor: 1.0000
Injection Date/Time:	15/Oct/15 16:09	Sample Weight: 1.0000

Chromatogram

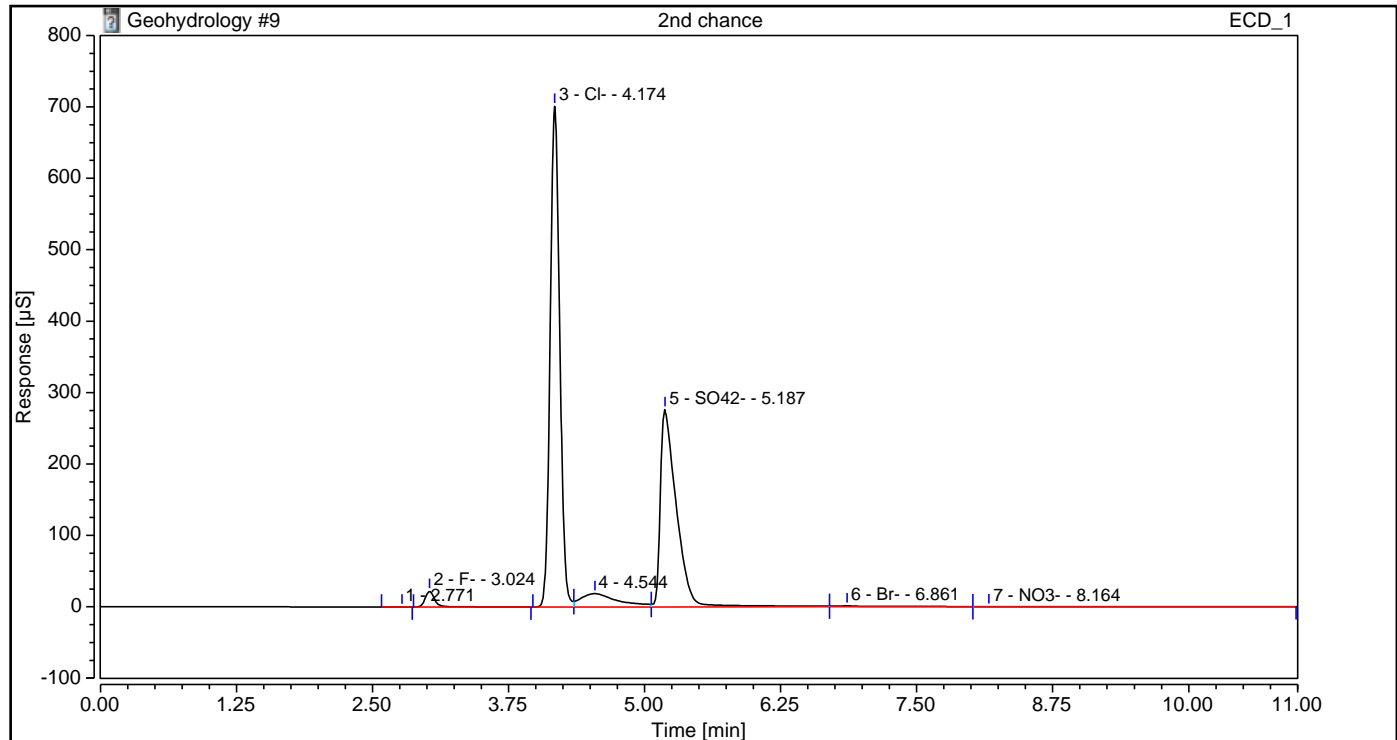


SST Results					
No.	Name	Inj. Condition	Peak	Test Result	Injection
Number of executed test cases: n.a.			Total Result:	Passed	

Chromatogram and Results

Injection Details			
Injection Name:	2nd chance	Run Time (min):	11.00
Vial Number:	9	Injection Volume:	5000.00
Injection Type:	Unknown	Channel:	ECD_1
Calibration Level:		Wavelength:	n.a.
Instrument Method:	Geohydrology	Bandwidth:	n.a.
Processing Method:	Geohydrology	Dilution Factor:	1.0000
Injection Date/Time:	15/Oct/15 16:23	Sample Weight:	1.0000

Chromatogram

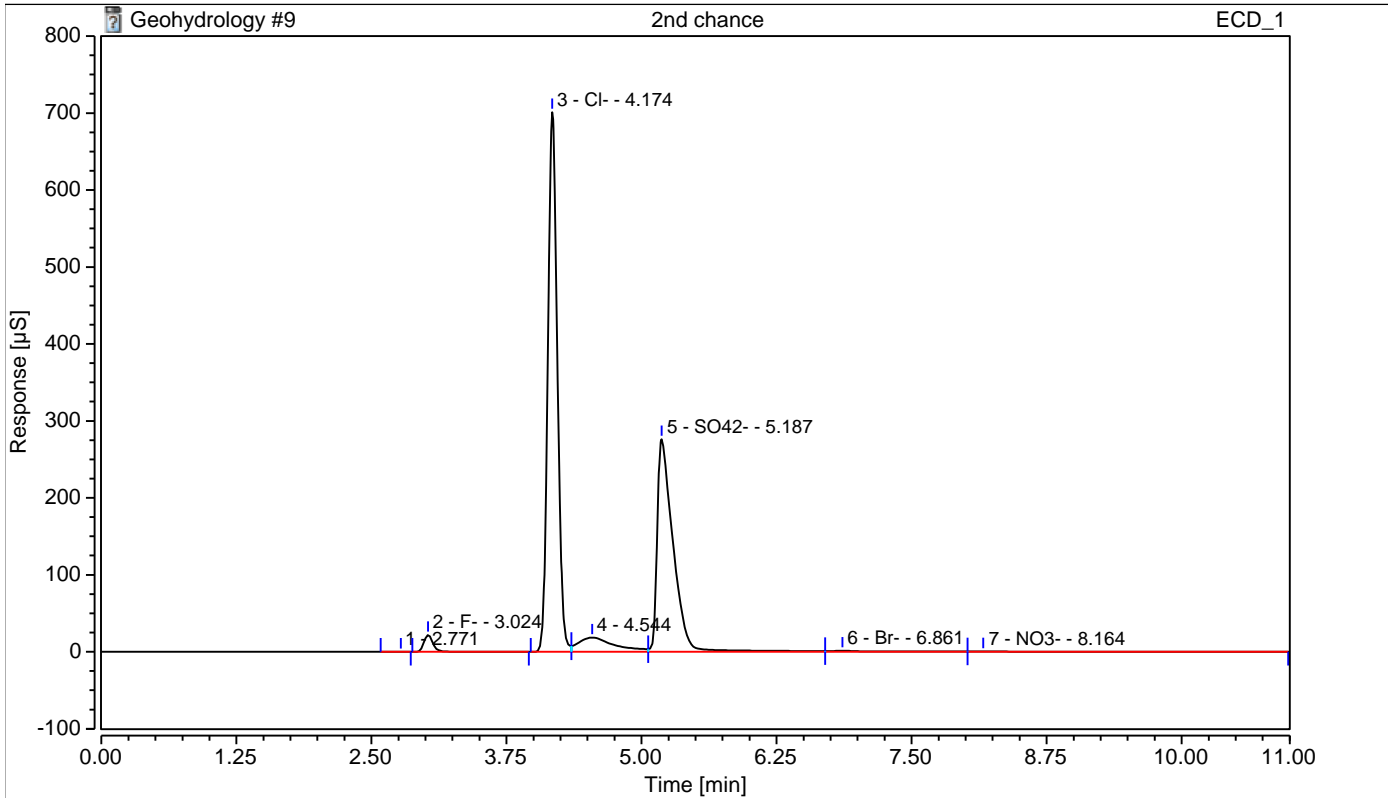


Integration Results							
No.	Peak Name	Retention Time min	Area µS*min	Height µS	Relative Area %	Relative Height %	Amount ppm
1		2.771	0.001	0.008	0.00	0.00	n.a.
2	F-	3.024	2.183	21.923	1.69	2.15	3.9270
3	Cl-	4.174	71.117	701.148	54.99	68.77	216.2783
4		4.544	7.248	18.595	5.60	1.82	n.a.
n.a.	NO2-	n.a.	n.a.	n.a.	n.a.	n.a.	n.a.
5	SO42-	5.187	47.594	276.123	36.80	27.08	190.0234
6	Br-	6.861	0.802	1.469	0.62	0.14	5.6868
7	NO3-	8.164	0.379	0.319	0.29	0.03	2.2806
n.a.	43-	n.a.	n.a.	n.a.	n.a.	n.a.	n.a.
Total:			129.324	1019.585	100.00	100.00	

Chromatogram and SST Results

Injection Details		
<i>Injection Name:</i>	2nd chance	<i>Run Time (min):</i> 11.00
<i>Vial Number:</i>	9	<i>Injection Volume:</i> 5000.00
<i>Injection Type:</i>	Unknown	<i>Channel:</i> ECD_1
<i>Calibration Level:</i>		<i>Wavelength:</i> n.a.
<i>Instrument Method:</i>	Geohydrology	<i>Bandwidth:</i> n.a.
<i>Processing Method:</i>	Geohydrology	<i>Dilution Factor:</i> 1.0000
<i>Injection Date/Time:</i>	15/Oct/15 16:23	<i>Sample Weight:</i> 1.0000

Chromatogram

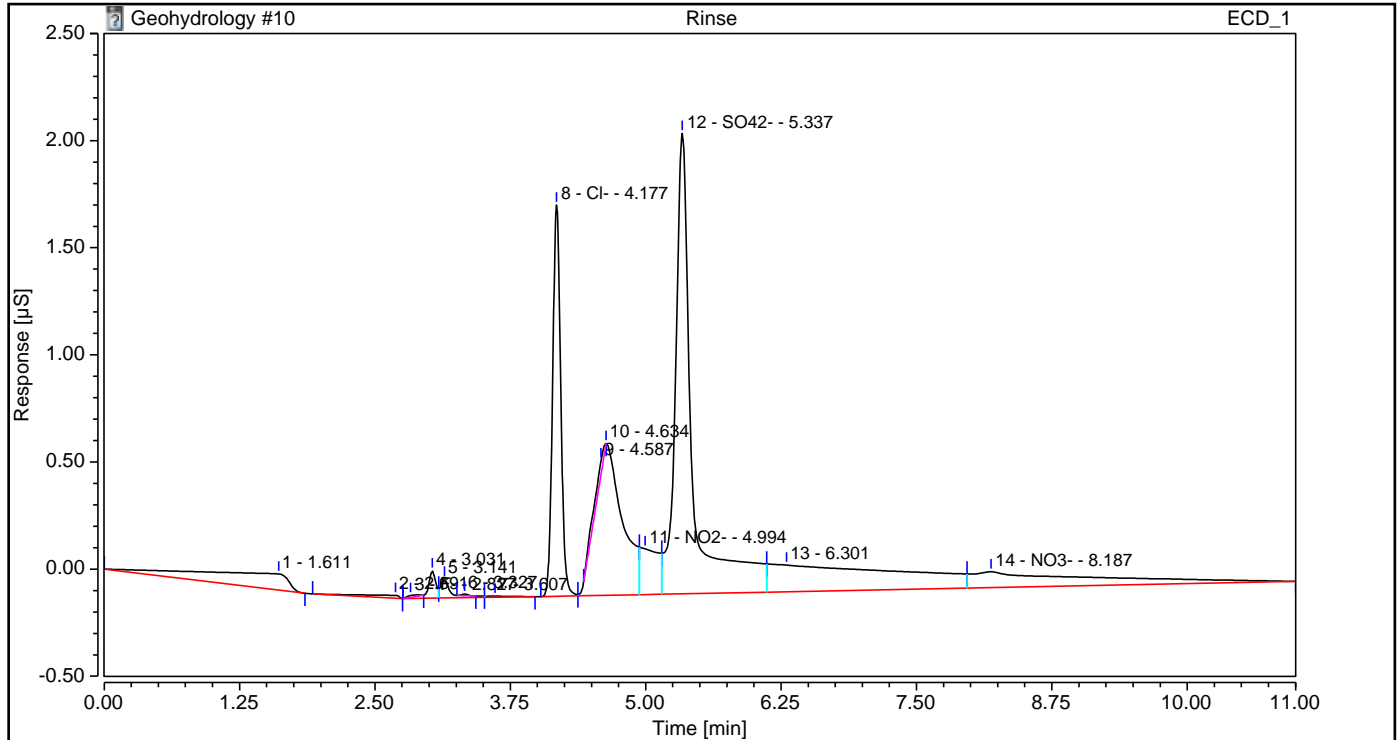


SST Results					
No.	Name	Inj.Condition	Peak	Test Result	Injection
Number of executed test cases: n.a.			Total Result:	Passed	

Chromatogram and Results

Injection Details			
Injection Name:	Rinse	Run Time (min):	11.00
Vial Number:	10	Injection Volume:	5000.00
Injection Type:	Unknown	Channel:	ECD_1
Calibration Level:		Wavelength:	n.a.
Instrument Method:	Geohydrology	Bandwidth:	n.a.
Processing Method:	Geohydrology	Dilution Factor:	1.0000
Injection Date/Time:	15/Oct/15 16:37	Sample Weight:	1.0000

Chromatogram

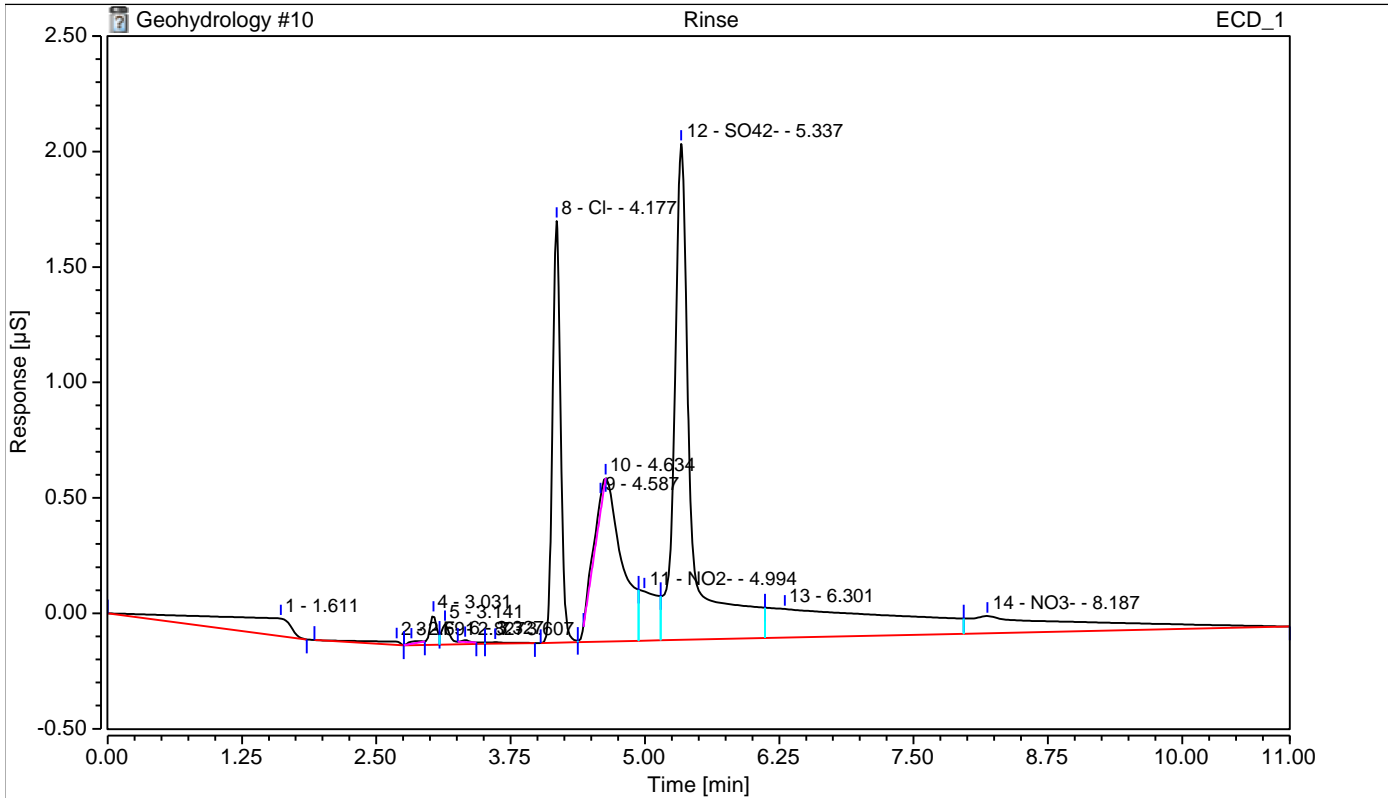


Integration Results							
No.	Peak Name	Retention Time min	Area µS*min	Height µS	Relative Area %	Relative Height %	Amount ppm
1		1.611	0.069	0.076	5.85	1.38	n.a.
2		2.691	0.005	0.014	0.45	0.25	n.a.
3	F-	2.827	0.001	0.009	0.09	0.17	0.4840
4		3.031	0.011	0.129	0.93	2.34	n.a.
5		3.141	0.010	0.088	0.83	1.60	n.a.
6		3.327	0.001	0.008	0.04	0.14	n.a.
7		3.607	0.001	0.006	0.12	0.11	n.a.
8	Cl-	4.177	0.159	1.826	13.45	33.26	0.5361
9		4.587	0.010	0.065	0.81	1.19	n.a.
10		4.634	0.204	0.709	17.21	12.92	n.a.
11	NO2-	4.994	0.042	0.213	3.57	3.89	0.3166
12	SO42-	5.337	0.397	2.149	33.54	39.14	1.9499
13		6.301	0.177	0.124	14.92	2.26	n.a.
n.a.	Br-	n.a.	n.a.	n.a.	n.a.	n.a.	n.a.
14	NO3-	8.187	0.097	0.074	8.19	1.36	0.7657
n.a.	43-	n.a.	n.a.	n.a.	n.a.	n.a.	n.a.
Total:			1.184	5.489	100.00	100.00	

Chromatogram and SST Results

Injection Details		
<i>Injection Name:</i>	Rinse	<i>Run Time (min):</i> 11.00
<i>Vial Number:</i>	10	<i>Injection Volume:</i> 5000.00
<i>Injection Type:</i>	Unknown	<i>Channel:</i> ECD_1
<i>Calibration Level:</i>		<i>Wavelength:</i> n.a.
<i>Instrument Method:</i>	Geohydrology	<i>Bandwidth:</i> n.a.
<i>Processing Method:</i>	Geohydrology	<i>Dilution Factor:</i> 1.0000
<i>Injection Date/Time:</i>	15/Oct/15 16:37	<i>Sample Weight:</i> 1.0000

Chromatogram

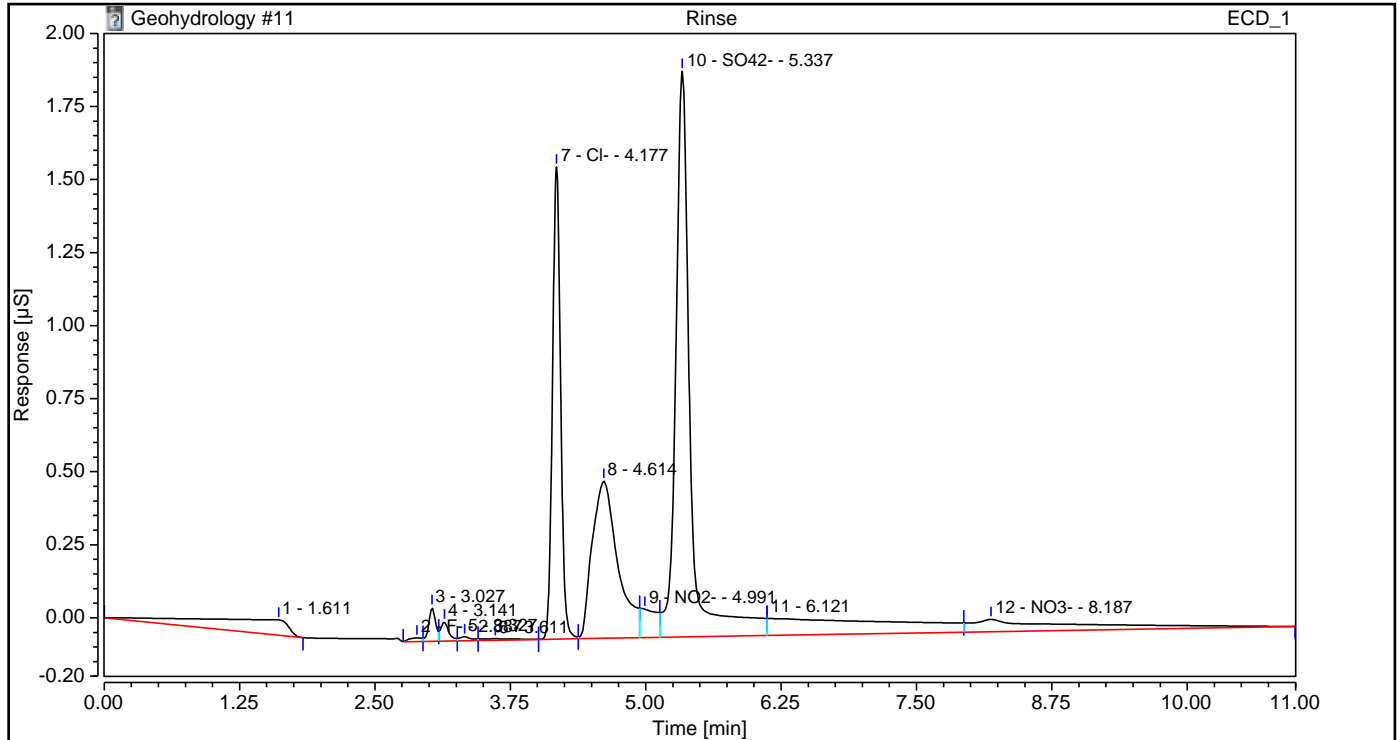


SST Results					
No.	Name	Inj. Condition	Peak	Test Result	Injection
Number of executed test cases: n.a.			Total Result:	Passed	

Chromatogram and Results

Injection Details			
Injection Name:	Rinse	Run Time (min):	11.00
Vial Number:	11	Injection Volume:	5000.00
Injection Type:	Unknown	Channel:	ECD_1
Calibration Level:		Wavelength:	n.a.
Instrument Method:	Geohydrology	Bandwidth:	n.a.
Processing Method:	Geohydrology	Dilution Factor:	1.0000
Injection Date/Time:	15/Oct/15 16:51	Sample Weight:	1.0000

Chromatogram



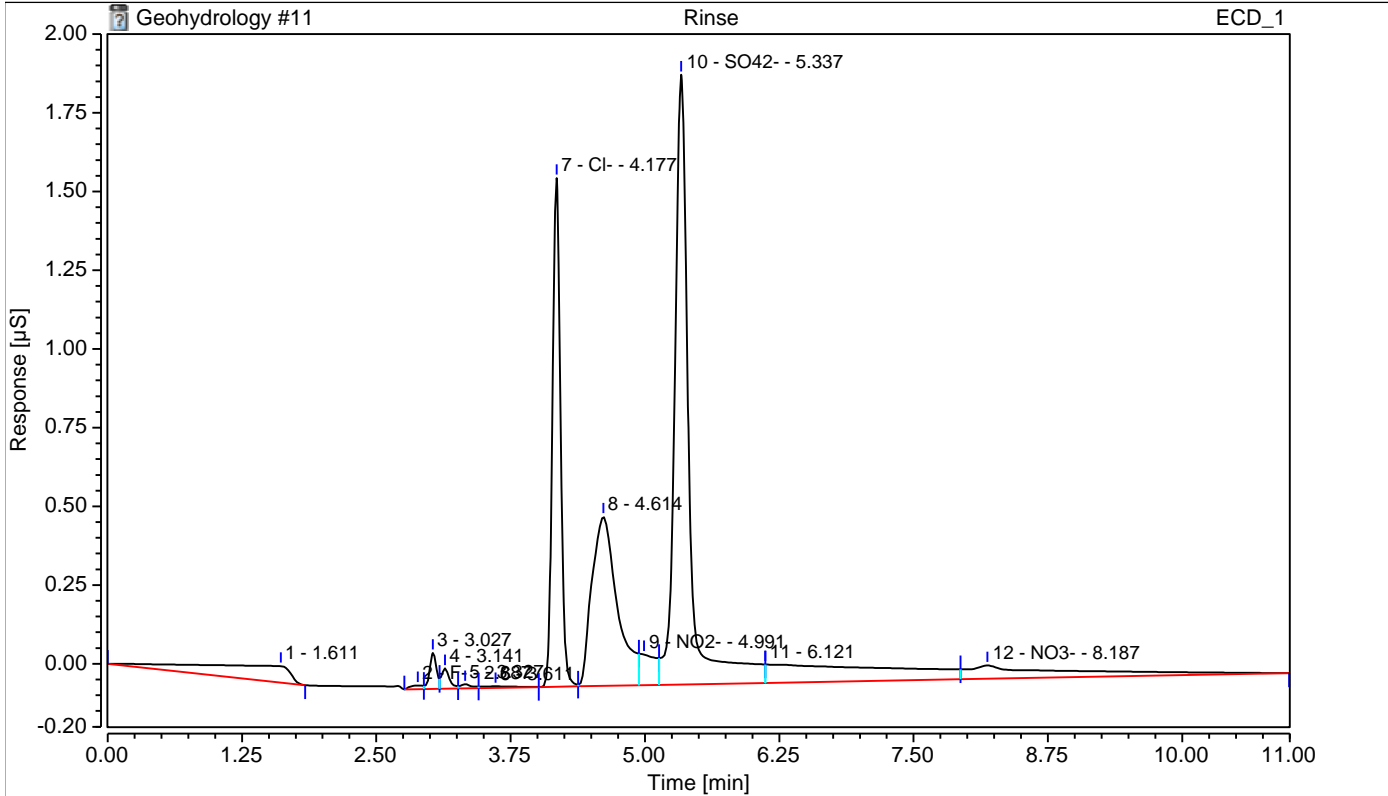
Integration Results

No.	Peak Name	Retention Time min	Area µS*min	Height µS	Relative Area %	Relative Height %	Amount ppm
1		1.611	0.048	0.052	5.96	1.14	n.a.
2	F-	2.887	0.002	0.012	0.22	0.27	0.4850
3		3.027	0.008	0.115	1.04	2.53	n.a.
4		3.141	0.006	0.065	0.72	1.42	n.a.
5		3.327	0.002	0.014	0.21	0.30	n.a.
6		3.611	0.002	0.005	0.23	0.12	n.a.
7	Cl-	4.177	0.141	1.616	17.62	35.50	0.4820
8		4.614	0.147	0.538	18.33	11.82	n.a.
9	NO2-	4.991	0.017	0.098	2.14	2.15	0.2028
10	SO42-	5.337	0.301	1.936	37.51	42.54	1.5674
11		6.121	0.079	0.059	9.90	1.29	n.a.
n.a.	Br-	n.a.	n.a.	n.a.	n.a.	n.a.	n.a.
12	NO3-	8.187	0.049	0.042	6.12	0.93	0.5095
n.a.	43-	n.a.	n.a.	n.a.	n.a.	n.a.	n.a.
Total:			0.802	4.552	100.00	100.00	

Chromatogram and SST Results

Injection Details		
Injection Name:	Rinse	Run Time (min): 11.00
Vial Number:	11	Injection Volume: 5000.00
Injection Type:	Unknown	Channel: ECD_1
Calibration Level:		Wavelength: n.a.
Instrument Method:	Geohydrology	Bandwidth: n.a.
Processing Method:	Geohydrology	Dilution Factor: 1.0000
Injection Date/Time:	15/Oct/15 16:51	Sample Weight: 1.0000

Chromatogram



SST Results					
No.	Name	Inj. Condition	Peak	Test Result	Injection
Number of executed test cases: n.a.			Total Result:	Passed	

Summary

Sequence Details

Name:	Geohydrology	Created On:	15/Oct/15 13:38:15
Directory:	Instrument Data\ICS2100\Geohydrology\Fall 2	Created By:	Metropolitan State
Data Vault:	ChromeleonLocal	Updated On:	15/Oct/15 18:05:09
No. of Injections:	11	Updated By:	Metropolitan State

By Component

F-

No.	Injection Name	Ret.Time min ECD_1 F-	Area $\mu\text{S} \cdot \text{min}$ ECD_1 F-	Height μS ECD_1 F-	Amount ppm ECD_1 F-	Rel.Area % ECD_1 F-	Peak Type ECD_1 F-
1	Std I	2.937	0.003	0.020	0.487	0.21	M
2	Std II	2.904	0.001	0.009	0.484	0.01	BM
3	Std III	3.041	1.107	14.910	2.229	8.46	BMB
4	Rinse	2.890	0.001	0.006	0.484	1.05	BM
5	JBR	3.027	1.551	17.258	2.930	1.47	BM
6	ErickBill	3.024	1.890	19.961	3.465	1.63	M
7	7 minute	2.867	0.001	0.009	0.484	0.00	M
8	TS	3.031	1.206	14.923	2.386	2.61	M
9	2nd chance	3.024	2.183	21.923	3.927	1.69	M
10	Rinse	2.827	0.001	0.009	0.484	0.09	Ru
11	Rinse	2.887	0.002	0.012	0.485	0.22	M